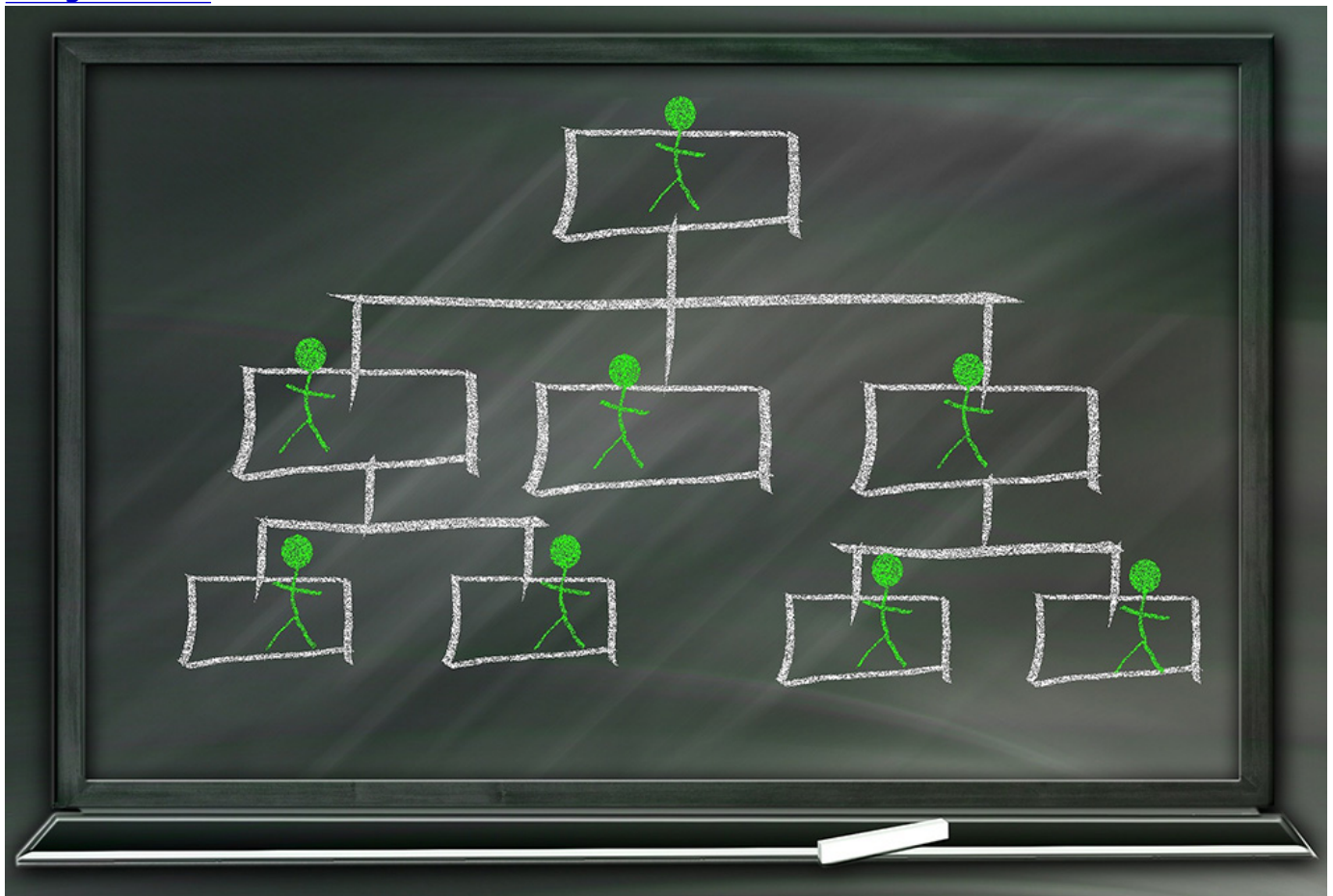


[Blog](#)

[Religious Life](#)



(Pixabay/geralt)



by A Nun's Life Ministry

[View Author Profile](#)

[Join the Conversation](#)

February 9, 2024

[Share on Bluesky](#)[Share on Facebook](#)[Share on Twitter](#)[Email to a friend](#)[Print](#)

A listener wonders: "If a sister is a teacher, and a priest also teaches at the same school, is the priest necessarily her supervisor?" In this clip from the "Ask Sister" podcast, Immaculate Heart of Mary Srs. Maxine Kollasch and Julie Vieira discuss where exactly women religious fall into the church hierarchy — and recall a leadership story that "shows the grit of the IHM sisters."

Click here to listen to the full "[Ask Sister](#)" podcast where this clip is from.

GSR [shares clips](#) from our friends at A Nun's Life Ministry. Check out full episodes of [all their podcasts](#) (Ask Sister, In Good Faith, Random Nun Clips and more, like the archived Motherhouse Road Trips) on their website, [ANunsLife.org](#).

Advertisement